



Arborist Report

Presented by:

Jean-Luc Bengle

ISA Board Certified Master Arborist PN-5680B

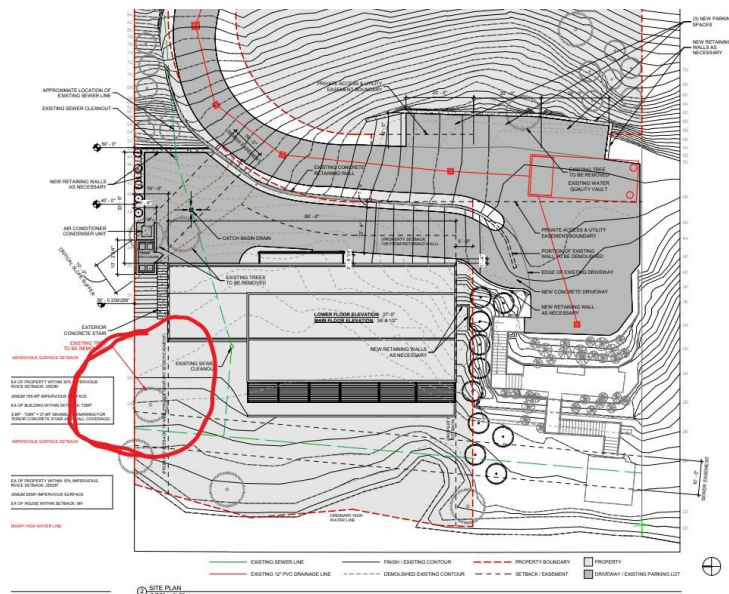
Tree Risk Assessor Qualified

jlbengle@vitalitree.com

(425) 443-4961

This report is concerning is concerning 2 trees on the partially developed lot at 4041 W Mercer way. The 1st tree this report deals with is a *Prunus cerasifera* 'Thunder Cloud' (thunder cloud plum) in the Northwest corner of the property just East of the start of the fence (Image A2.) This tree has a DBH of 20 inches, a height of 32' and a spread of 22'. The tree was topped many years ago at 24', and has grown reactionary sprouts along the main trunks and below the old topping cuts (Image A3) there is also a very large old cut of a significant scaffold branch growing northward over the property line. The tree has a co-dominant split at about 4' off of the ground (Image A4) and a very weak connection with a long seam joining the 2 stems together. The tree appears to be in good vigor and has a normal twig density for the species. This tree will be negatively impacted by a new drainage system that will need to be hooked up the sewer line with excavation resulting in loss of roots leading to an unstable condition and a loss of adequate absorbing roots to maintain a healthy canopy (Image A1). It is my recommendation that the tree be removed before construction begins to avoid any future hazardous situations.

A1





A2





A3





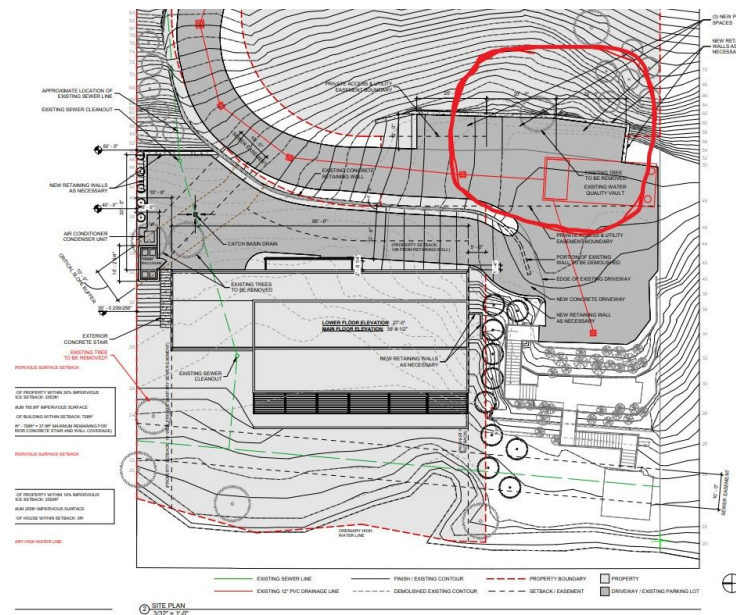
A4





The Second tree is a *Quercus coccinea* (scarlet oak) just East of the main parking pad (Image B2) This tree has a DBH of 27", a height Of 70', and a spread of 45'. The tree is leaning towards the West At a 70° angle. This was caused by phototropism due to other trees to the East of it, and the upper canopy has mostly self corrected into a more vertical growth pattern. There are several main scaffold branches Growing West making the tree very asymmetrical in its weight distribution. There is a large old wound about 20' up from the base that has signs of minor decay (Image B3). There is one large scaffold branch with a shear plane crack that is resting in another scaffold branch below it (Image B4). There are also several smaller broken branches hanging in the tree. The tree has normal health and vigor and normal branch density. The tree will be negatively impacted due to proposed construction of new parking spaces and retaining walls as the root zone will be greatly impacted making the tree unstable and unable to absorb enough water to keep the canopy healthy and vigorous (Image B1). It is my recommendation the tree be removed before construction to avoid any future hazardous conditions

B1





B2





B3





B4

